



# Single Axis Servo Control System

www.solutions4u-asia.com

The Single Axis Servo Control System could be used for servo motor control and following control experiments. The system consists of timing belt, gear box, coupler and potentiometer together with Googol Technology's motion controller. All parts are selected from industrial standard components. The system is a perfect system for fundamental experiment for motor control.

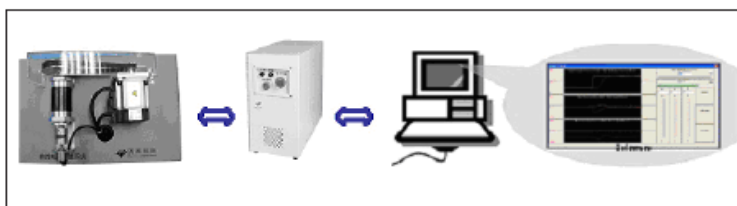
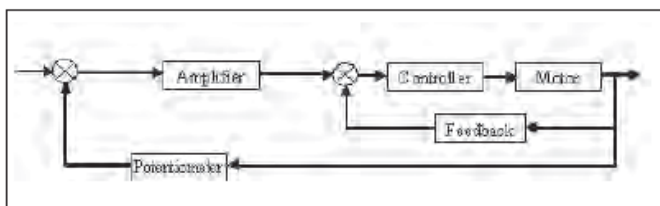


## Main Feature:

- Intelligent Servo Driver
- Unlimited rotation of motor and potentiometer
- Less noise by using timing belt and gear box together
- Industrial standard DC servo motor, driver and encoder
- Experiments are based on both MATLAB® and IPM motion studio environments

Schematic Diagram

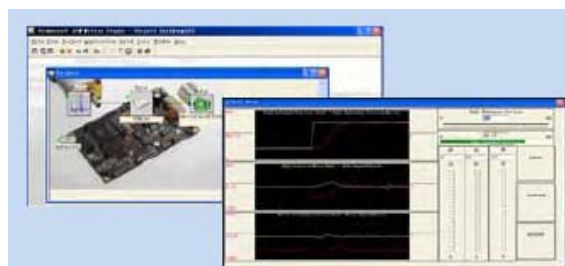
Note: The outlook of the product might be different



## Reference experiments:

- Servo Motor Speed Control
- Servo Motor Position Control
- Motion Controller Programming
- System Identification
- Data Acquisition
- Motor Following

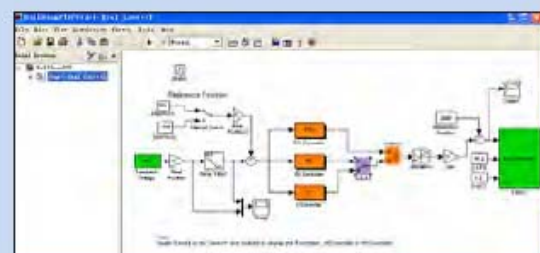
Control Software



IPM Motion Studio

## Technical Specification

Size (L x W x H)	300mm x 180mm x 190mm
Servo Motor Power	35W
Encoder	2500 Pulse/Rev.
Gear Ratio of Timing Belt	1 : 4
Potentiometer Linearity	± 1.5%
Weight	< 10 Kg



MatLab Simulink

## Ordering Guide

Model Number	Product Name	Description
GSMT 1012	DC Servo Single Axis Control System	<ul style="list-style-type: none"> <li>• System Hardware</li> <li>• Electrical Control Box</li> <li>• IPM Motion Studio Control Program</li> <li>• MATLAB Simulink Toolbox</li> </ul>

Distributed by:

**Solutions4U**